

Series 038

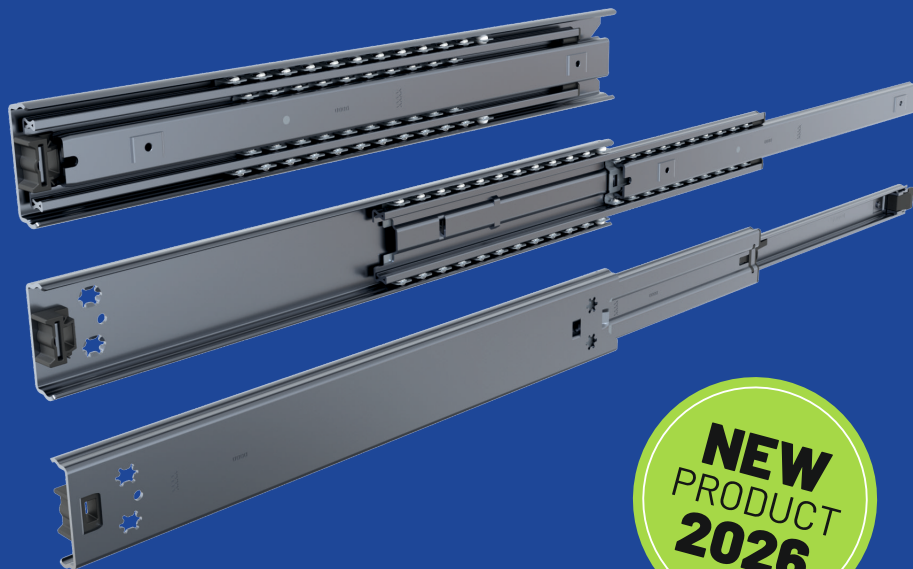
Load up to 80 kg/pair

Full extension, Cross section 18,5 x 57,4 mm

ZM100

Zinc-magnesium

Galvanised steel strip

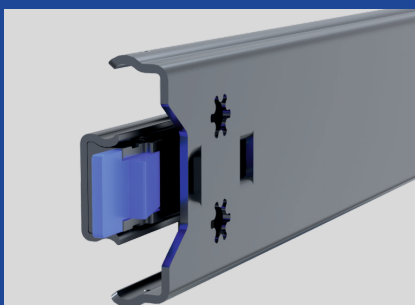


**NEW
PRODUCT
2026**

TELESCOPIC SLIDES MADE IN EUROPE

FACTS:

- Full extension in the length 307,5 - 407,5 - 507,5 - 927,5 mm
- Load up to 80kg/pair
- Cross section 18,5 x 57,4 mm
- Lock-in
- Hold-out
- Disconnect
- Material ZM100
- Good corrosion resistance



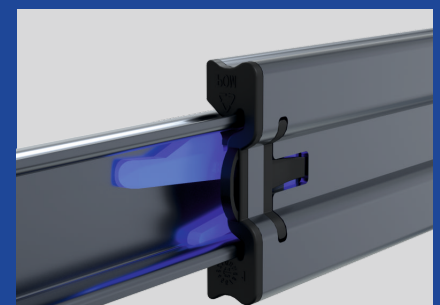
Lock-in

Locks the telescopic slide securely in the closed position. By pressing the release lever, the slide can be unlocked and extended.



Hold-out

Holds the telescopic slide in the open position. By applying slight pressure, the resistance is overcome and the slide can be closed.



Disconnect

By operating the release lever, the inner rail can be disconnected, making installation easier. Drawers can also be completely removed from the cabinet.

TYPICAL APPLICATION AREAS:

Typical application areas for our telescopic slides of Series 038 made from ZM100 include **furniture** and **interior construction**, **mechanical** and **plant engineering**, **vehicle construction**, as well as **shopfitting** and **interior fit-out projects**. Thanks to their compact design and precise ball-bearing operation, the slides are ideal for drawers, tool pull-outs, technical enclosures or service units.

The integrated lock in the closed position ensures secure retention during transport or in mobile applications. An integrated hold-out function keeps the extension reliably in the open position. Thanks to the quick-release feature, the inner rail can be easily removed, significantly simplifying installation and maintenance. In combination with the corrosion-resistant ZM100 material, the slides are particularly durable.

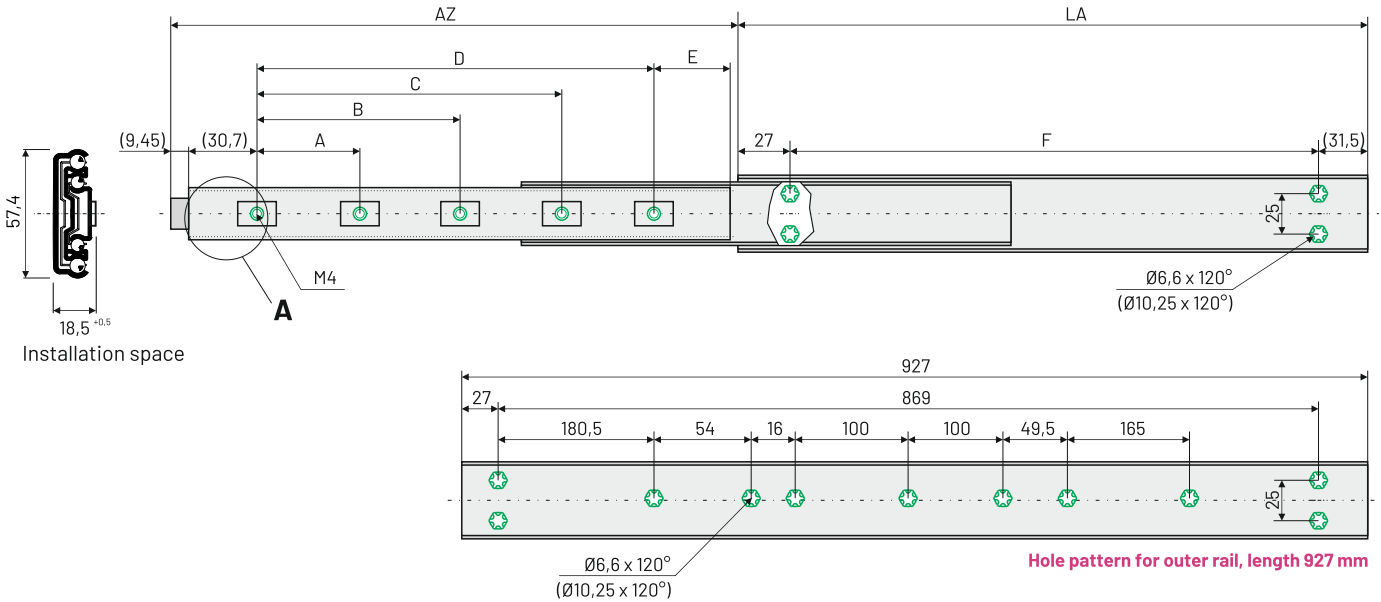
**Powder coating
available on request.**

SCHOCK

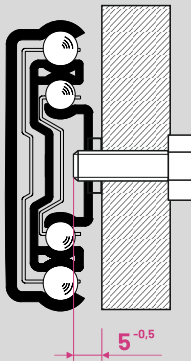
TELESCOPIC SLIDES

schock-group.com

Technical specifications



Detail „A“



Max. screw-in depth of the thread into the inner rail

Item no.:	TK/kg 10.000	LA mm	AZ mm	A mm	B mm	C mm	D mm	E mm	F mm	Weight kg/piece
07000996001	80	307,5	298	-	-	-	213	38,8	249	0,88
07000996002	80	407,5	406	-	-	-	308	43,8	349	1,17
07000996003	80	507,5	507	-	293	-	410	41,8	449	1,46
07000996004	75	927,5	1139	230	460	690	850	21,8	869	2,61

TK/kg = Load capacity per pair of telescopic slides over 10,000 cycles (1 cycle = 1 opening and 1 closing operation)
LA = Length of the telescopic slide | AZ = Extension length of the telescopic slide

Installation notes:

Outer rail – countersunk screw M5
Inner rail – M4, please refer to detail “A”.

To fasten the outer rail, the inner rail must be removed using the quick-release mechanism.

Temperature range:

Operating temperature -20°C bis +70°C

Suitable for horizontal installation, load capacity reduction of up to 70%

Deflection max. 4.25% of the extension travel

WARNING – Disconnect (Quick release) of the inner rail

When reinserting the separated inner rail, adjustment of the ball cage is required. Insert the inner rail into the body of the telescopic slide and push it together. You will encounter noticeable resistance, which must be overcome with slightly increased force until the inner rail is fully retracted and audibly engages in the locking mechanism.

The adjustment of the ball cage is then complete.

The telescopic slide can subsequently be operated as usual.



TELESCOPIC SLIDES

schock-group.com