

Serie 038

Load bis 40 kg/Paar

Full extension, Cross section 18,5 x 57,4 mm



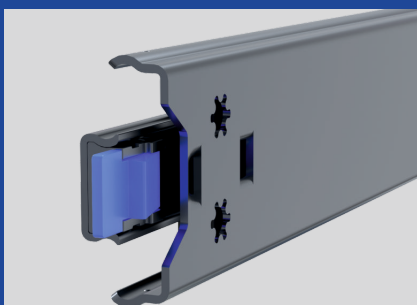
ALUMINIUM

AlMg4,5Mn

TELESCOPIC SLIDES MADE IN EUROPE

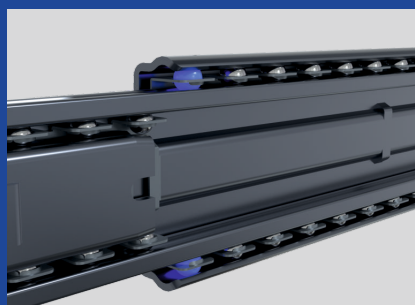
FACTS:

- Full extension in length
307,5 - 407,5 - 507,5 mm
- Load bis 40kg/Paar
- Cross section 18,5 x 57,4 mm
- Lock-in
- Hold-out
- Disconnect
- Material AlMg4,5Mn
- Good corrosion resistance



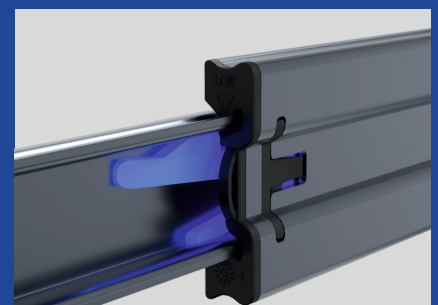
Lock-in

Locks the telescopic slide securely in the closed position. By pressing the release lever, the slide can be unlocked and extended.



Hold-out

Holds the telescopic slide in the open position. By applying slight pressure, the resistance is overcome and the slide can be closed.



Disconnect

By operating the release lever, the inner rail can be disconnected, making installation easier. Drawers can also be completely removed from the cabinet.

TYPICAL APPLICATION AREAS:

SCHOCK aluminium telescopic slides of Series 038 are used wherever precise extension, low weight and good corrosion resistance are required.

Typical application areas include **furniture** and **interior construction**, for example for drawers, technical compartments or concealed pull-outs in high-quality furniture. They are also used in **caravan** and **vehicle construction** for extendable storage solutions, equipment drawers or kitchen modules, as the low weight of the slides contributes to overall weight reduction.

Aluminium telescopic slides are also suitable for maritime applications, such as in boat and yacht interiors for pull-out storage compartments, galley modules or technical installations.

SCHOCK

TELESCOPIC SLIDES

schock-group.com

Serie 038

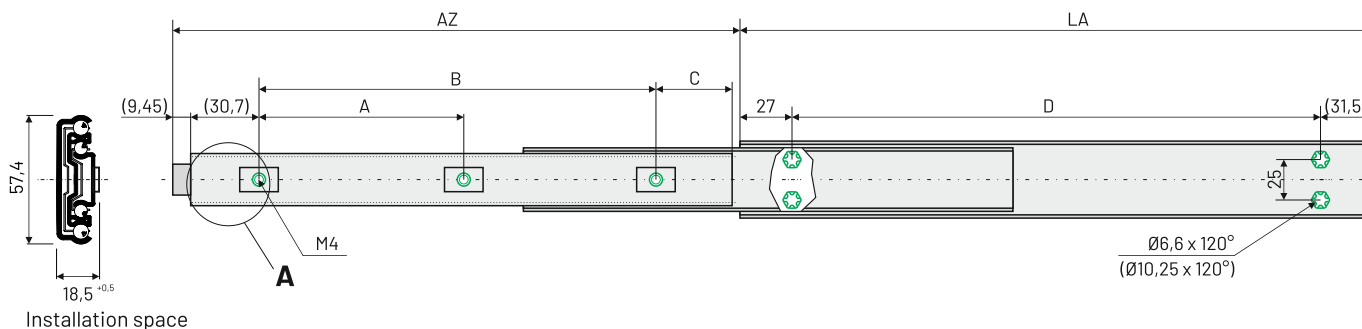
Load bis 40 kg/Paar

Full extension, Cross section 18,5 x 57,4 mm

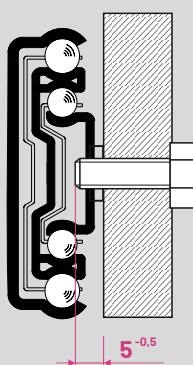
ALUMINIUM

AlMg4,5Mn

Technical specifications



Detail „A“



Max. screw-in depth of the thread into the inner rail

Item no.:	TK/kg 10.000	LA mm	AZ mm	A mm	B mm	C mm	D mm	Weight kg/piece
07000995001	40	307,5	298	-	213	38,8	449	0,36
07000995002	40	407,5	406	-	308	43,8	249	0,48
07000995003	40	507,5	507	293	410	41,8	449	0,60

TK/kg = Load capacity per pair of telescopic slides over 10,000 cycles (1 cycle = 1 opening and 1 closing operation)
 LA = Length of the telescopic slide | AZ = Extension length of the telescopic slide

Installation notes:

Outer rail – countersunk screw M5
 Inner rail – M4, please refer to detail "A".

To fasten the outer rail, the inner rail must be removed using the quick-release mechanism.

Temperature range:

Operating temperature -20°C bis +70°C

Not suitable for horizontal installation

Deflection max. 4.25% of the extension travel

WARNING – Disconnect (Quick release) of the inner rail

When reinserting the separated inner rail, adjustment of the ball cage is required. Insert the inner rail into the body of the telescopic slide and push it together. You will encounter noticeable resistance, which must be overcome with slightly increased force until the inner rail is fully retracted and audibly engages in the locking mechanism.

The adjustment of the ball cage is then complete.

The telescopic slide can subsequently be operated as usual.



TELESCOPIC SLIDES

schock-group.com